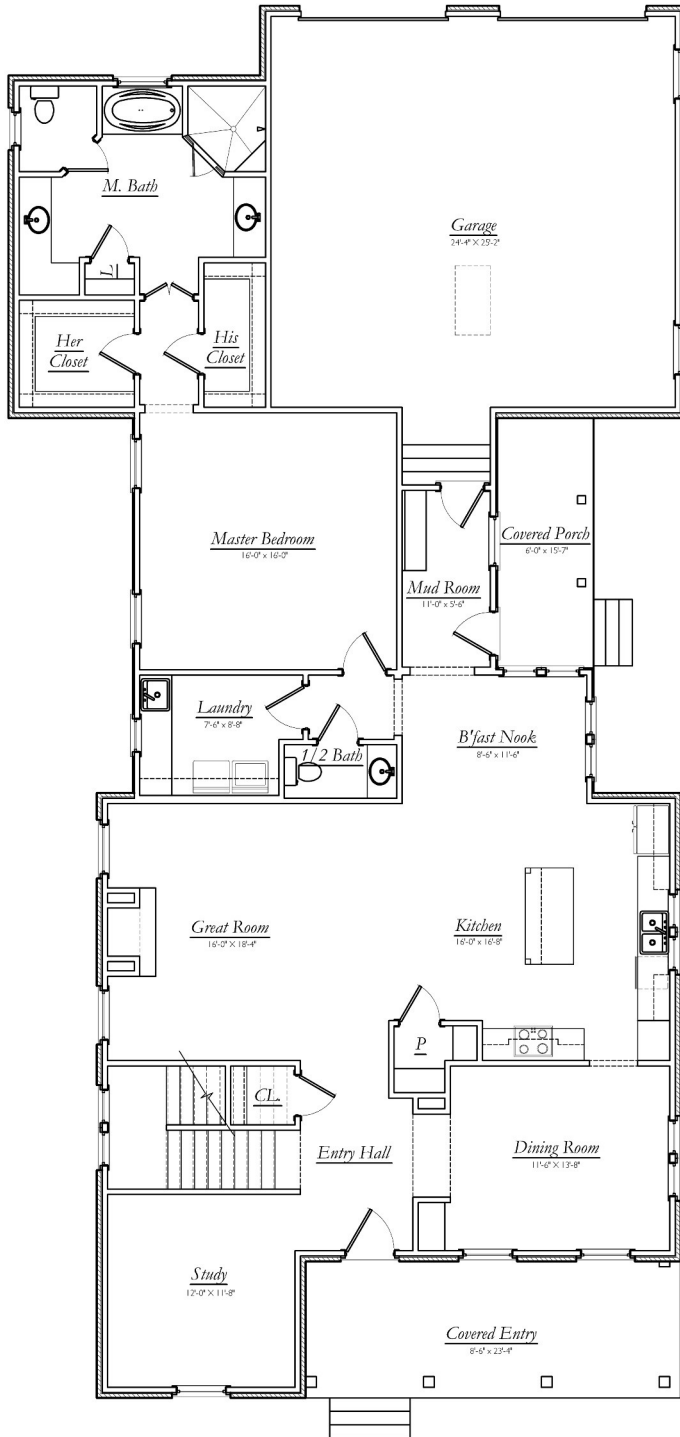


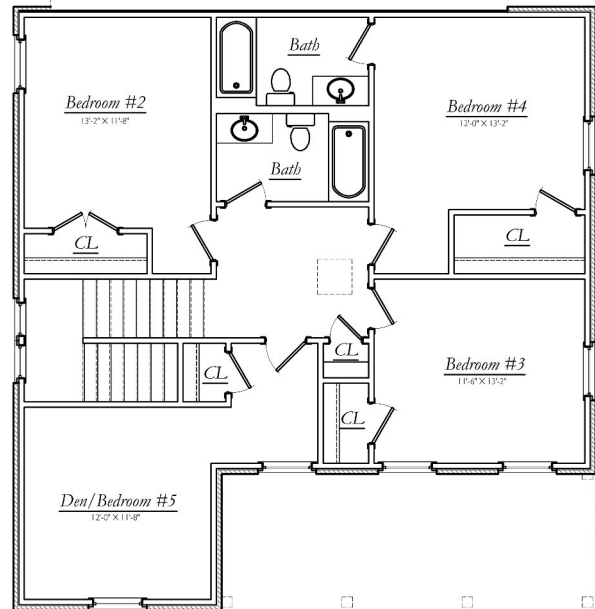
3,055 Square Feet (Heated)
 2,016 (Main) + 1,039 (Up)
 41'6" wide x 86' Deep
 Alley or Rear Side Garage

Fowler Farmhouse

5 Bedrooms, 3-1/2 Baths



This stately painted brick home with two porches offers an open floor plan great for entertaining. Inside are five bedrooms, three and a half baths, a private study, great room with fireplace, dining room, gourmet kitchen with walk-in pantry and island, cozy breakfast nook with wraparound windows and a mudroom with built-in bench.



Plan Copyright 2011 David B. DeLozier

Contact: Barry DeLozier
 barry@turnkeynewhouse.com
 (205) 368-4516



TurnKey New House

www.turnkeynewhouse.com